

# ZEB Nickel Project

Resources for the Clean Energy Revolution

CORPORATE PRESENTATION - NOVEMBER 2025

AIM – URU  
TSX - ZBNI



# DISCLOSURE

## Forward Looking Statement

The document attached hereto and the presentation of which it forms part (together the "Materials") have been prepared by URU Metals Limited (the "Company"). The Materials are confidential and personal to you and are furnished to you as background information to provide a basis for you, as a potential investor, to consider whether to pursue an acquisition of shares in the Company. The Materials do not constitute an offer or invitation for the sale or purchase of any securities, nor do they, nor do they purport to, set out or refer to all or any of the information a potential investor might require or expect in making a decision as to whether or not to deal in shares in the Company. The Materials do not comprise an admission document, listing particulars or a prospectus relating to the Company and the information contained in, and communicated to you during, this presentation does not constitute, or form part of, and should not be construed as, an offer or invitation or other solicitation or recommendation to purchase or subscribe for any securities in the Company. The Materials have not been approved by an authorised person within the meaning of the Financial Services and Markets Act 2000. Reliance on the Materials for the purpose of engaging in any investment activity may expose an individual to a significant risk of losing all of the property or other assets invested. The Materials do not constitute and are not a prospectus or listing particulars (under either the Prospectus Regulations 2005 (as amended), the Financial Services and Markets Act 2000 ("FSMA") or the Prospectus Rules of the Financial Conduct Authority) and should not be construed as such. No reliance may be placed for any purpose whatsoever on the information, representations or opinions contained in the Materials or on the completeness, accuracy or fairness of it. No undertaking, representation or warranty or other assurance, express or implied, is made by or on behalf of the Company or any of their respective directors, officers, employees, advisers or any other persons as to the fairness, accuracy or completeness of the information or estimates or opinions or other statements about the future prospects of the Company or any of their respective businesses contained in the Materials or referred to in the presentation given in connection therewith and no responsibility, liability or duty of care whatsoever is accepted by any such person in relation to any such information, representation, projection, forecast, opinion, estimate or statement including in the case of negligence, but excluding any liability for fraud. Axis Capital Markets Limited (the Company's broker) has not approved the Materials as a financial promotion for the purposes of section 21 of FSMA or otherwise. Whilst all reasonable care has been taken to ensure that the facts stated in these presentation materials are accurate and that any forecasts, opinions and expectations contained therein are fair and reasonable, Axis Capital Markets Limited has not independently verified the contents of these Materials and no reliance whatsoever should be placed on them. This document constitutes a 'financial promotion' for the purposes of section 21 of the FSMA and its distribution in the United Kingdom is restricted. Accordingly, this document will not be offered to the public in the United Kingdom (within the meaning of section 102B of the FSMA) save in circumstances where it is lawful to do so without an approved prospectus (within the meaning of section 85 of the FSMA) being made available to the public before the offer is made. In the United Kingdom, the Materials are only being directed at persons: (a) persons who are outside the United Kingdom; (b) investment professionals falling within Article 19(5) of the Financial Services and Markets Act 2000 (Financial Promotion) Order 2005 (SI 2005/1529) (as amended) (the "Order"); (c) high net worth companies, unincorporated associations and other bodies falling within Article 49(2)(a) to (d) of the Order; (d) certified high net worth individuals within Article 48 of the Order who, in this regard, have signed a statement dated within a period of 12 months ending on the date of receipt of this document complying with Part 1 of Schedule 5 of the Order stating that among other things, they have either or both: (i) during the financial year immediately preceding the date on which the statement is signed an annual income of not less than £100,000 ; or (ii) held, throughout the financial year immediately preceding the date on which the statement is signed, net assets to the value of not less than £250,000 (excluding the property which is their primary residence or any loan secured on that residence, any of their rights under a qualifying contract of insurance within the meaning of the Financial Services and Markets Act 2000 (Regulated Authorities) Order 2001, or any benefits (in the form of pensions or otherwise) which are payable on termination of their service or death or retirement and to which they are (or their dependants are), or may be entitled; (e) sophisticated investors falling within Article 50 of the Order; (f) self-certified sophisticated investors falling within Article 50A of the Order; and (g) other persons to whom it may lawfully be communicated (all such persons together being "relevant persons").

The investment or investment activity to which the Materials relate are available only to such persons and will be engaged with only with such persons. If you are not such a person: (i) you should not take part in the presentation and nor should you have received the Materials; (ii) please return this document to the Company's registered office or representative at the presentation as soon as possible and take no other action; (iii) please leave the presentation immediately after returning the Materials; and (iv) you may not rely on or act upon the matters communicated by the Materials. The distribution of this document in other jurisdictions may be restricted by law and the persons into whose possession this document comes should inform themselves about, and observe, any such restrictions. The Materials are confidential and should not be distributed, published, reproduced or otherwise made available in whole or in part by recipients to any other person and in any other country outside the United Kingdom where such distribution may lead to a breach of any legal or regulatory requirement. The Materials are being made available on the basis that the recipients keep confidential any information contained therein, whether orally or in writing, in connection with the Company. The Materials are confidential and must not be copied, reproduced, published, distributed, disclosed or passed, directly or indirectly, to any other person or published, in whole or in part, for any purpose at any time without the prior written consent of the Company. By attending the presentation and/or accepting a copy of the Materials you agree to be bound by the foregoing provisions. The information described in the Materials may contain certain information that is confidential, price-sensitive and which has not been publicly disclosed. By your receipt of the Materials you recognize and accept that some or all of the information in the Materials may be "inside information" as defined in Article 7 of the Market Abuse Regulation EU 596/2014 ("MAR") and constitutes a "market sounding" for the purpose of Article 11 of MAR. You recognise and accept that such information is being provided to you by the Company pursuant to Article 11 of MAR and you confirm, warrant and undertake that you will keep the information confidential and will not: (i) deal, or attempt to deal, in financial instruments (as defined in MAR) relating to that information, or encourage another person to deal or disclose the information before the inside information is made public; (ii) or cancel or amend an order which has already been placed concerning a financial instrument to which such information relates; (iii) disclose the inside information to another person other than in the proper course of the exercise of your employment, profession or duties; or (iv) engage in behaviour based on any inside information which might amount to market abuse or market manipulation for the purposes of MAR. Recipients should take their own legal advice on the obligation to which they will be subject and the application of MAR and in particular make their own assessment of whether they are in possession of inside information and when such information ceases to be inside information. Forward-looking Statements: The Materials contain forward-looking statements. These statements relate to the future prospects, developments and business strategies of the Company and its subsidiaries (the "Group"). Forward-looking statements are identified by the use of such terms as "believe", "could", "envisage", "estimate", "potential", "intend", "may", "plan", "will" or the negative of those, variations or comparable expressions, including references to assumptions. The forward-looking statements contained in the Materials are based on current expectations and are subject to risks and uncertainties that could cause actual results to differ materially from those expressed or implied by those statements. If one or more of these risks or uncertainties materialises, or if underlying assumptions prove incorrect, the Group's actual results may vary materially from those expected, estimated or projected. Given these risks and uncertainties, potential investors should not place any reliance on forward-looking statements, and the Company accepts no obligation to disseminate any updates or revisions to such forward-looking statements. These forward-looking statements speak only as at the date of the Materials.

## Competent Person Statement

The technical information in this report that relates to the Company's exploration projects and activities has been compiled by Richard Montjoie, a consultant of URU Metals Limited. Mr Montjoie is a registered member of the South African Council for Natural Scientific Professions (SACNASP) membership number 400131/09. Mr. Montjoie holds a M.Sc. in Economic Geology from the University of Witwatersrand, South Africa, and is fellow of the Geological Society of South Africa (GSSA). Richard Montjoie has supervised the preparation of the scientific and technical information that forms the basis for the information set out in this presentation and has approved the disclosure herein. Mr. Montjoie is not independent of the Company.

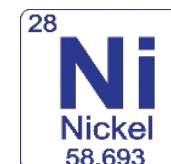


# Project Highlights

- 1 Tier-One Ni-Cu-PGE District:** Located on the Northern Limb of the Bushveld Complex, hosting more than 75% of global platinum reserves and significant nickel deposits.
- 2 Prime Location:** Adjacent to Ivanhoe's Platreef Project and along strike from Valterra Platinum's Mogalakwena Mine, the world's largest open-pit Ni-Cu-PGE operation.
- 3 Advanced Nickel Sulphide Deposit:** Four vertically stacked, de-risked mineralised zones with 13,990 m of diamond drilling completed across 40 drillholes.
- 4 Granted and Executed Licences:** Mining Right secured for a 30-year period.
- 5 Large Project Footprint:** Approximately 4,660 ha of privately owned farmland, with access to established infrastructure and an experienced local mining ecosystem.
- 6 2025 Geophysics Results:** Airborne gravity, magnetics, and Spectrem electromagnetic surveys identify multiple coincident conductors, confirming several sulphide-prospective feeder-conduit targets.
- 7 Environmentally Responsible Development:** Fully authorised by the DMRP, with potential for low-cost nickel production using proven flotation technology in an environmentally sustainable manner.



## LOCATION



## MINERALISATION



## SUSTAINABILITY



# Management Team

## **JOHN ZORBAS** CEO of URU Metals Limited

Mr. John Zorbas is a resource entrepreneur with a proven track record in the metals exploration and development industry. He has held senior advisory positions in various facets of business including operations, marketing, sales, strategic planning and structured finance. Mr. Zorbas has been the Company's Chief Executive Officer since 2 June 2014. He was appointed Non-executive Chairman of Management Resource Solutions PLC in April 2017. He also served as the President of MGM Productions Group Inc., as well as Director of both ZorCorp Capital Holdings and Starline Capital Holdings Infrastructure Fund. He served as the Chief Executive Officer and a Director of Monchhichi PLC (former: Mercom Capital PLC) until 23 December 2016. Mr. Zorbas also served as a Director of Millennial Esports Corp. until 20 October 2016 and Stratton Capital Corp. He is a founding shareholder of Asian Coast Development Ltd. Mr Zorbas holds an Honors Bachelors in Economics from the University of Toronto.

## **ANTHONY JAMES NIEUWENHUYNS** CEO of Zeb Nickel Corp.

Mr. Nieuwenhuys was previously Chief Executive Officer at Eurasia Mining PLC, a PGM and battery metals company, listed on AIM, focused on Russian PGE and battery metals assets. Prior to this he was the Chief Operating Officer at Polyus Gold, Russia's largest gold miner and the Chief Executive Officer at South African Lesego Platinum Mining Limited. James has an engineering background and has also held senior executive positions at a number of EPC organizations, including SNC Lavalin and Bateman Diamonds.

## **RICHARD MONTJOIE** VP Exploration

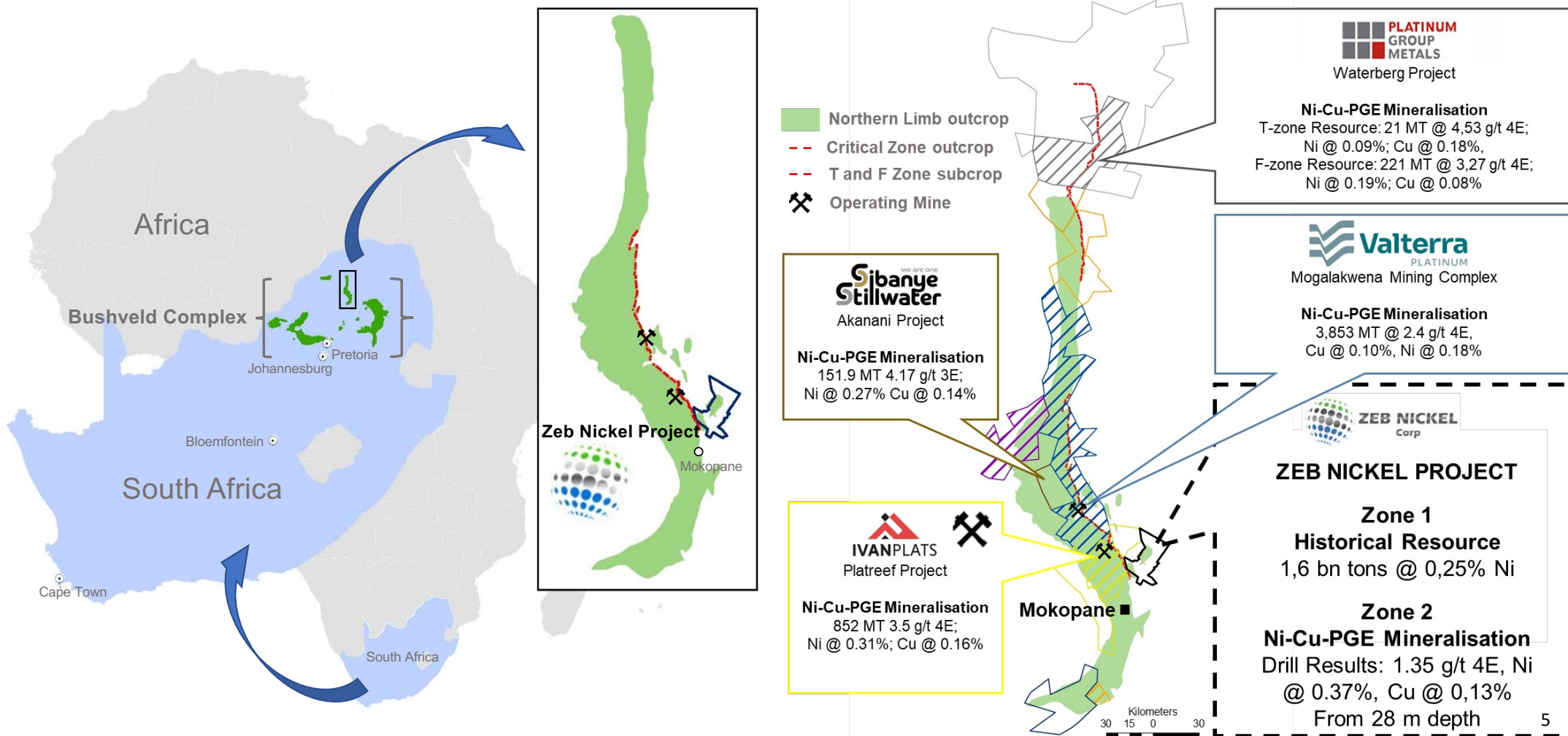
Richard is a seasoned professional with broad experience across multiple exploration programs in South Africa and Northern Canada, including nickel, PGE, diamond, coal, coal-bed methane, zinc and gold projects. He has advanced several Ni-PGE projects from early exploration to development-ready status, providing expert geoscientific guidance to ensure effective planning, data acquisition and project execution. Notably, as Project Manager for the ~50 Moz Lesego Platinum Project, he led the programme from an inferred resource through to a completed bankable feasibility study with proven and probable reserves, delivering the project on time and under budget. His leadership, technical expertise and meticulous oversight across exploration design, operational planning and licensing processes were central to the project's success.

## **TOM PANOULIAS** VP of Corporate Development & Director

Tom has previously worked at Echelon Wealth Partners, Fraser Mackenzie, and Dundee Capital Markets, raising over one billion dollars for issuers in the mining sector and advising senior management teams on numerous merger and acquisition transactions. Prior to entering capital markets, Mr. Panoulis held senior roles at Kinross Gold Corporation and TVX Gold Inc. in corporate development, responsible for managing various acquisition and divestiture activities. He currently is the Vice President of Corporate Development for Freeman Gold Corp and on the Board of Bonavista Resources Corp. Mr. Panoulis holds an Honours Bachelor of Commerce degree from the University of Toronto and is a member of the Canadian Institution of Mining and Metallurgy and the Toronto Society of Financial Analysts.



# Project location and Neighbours

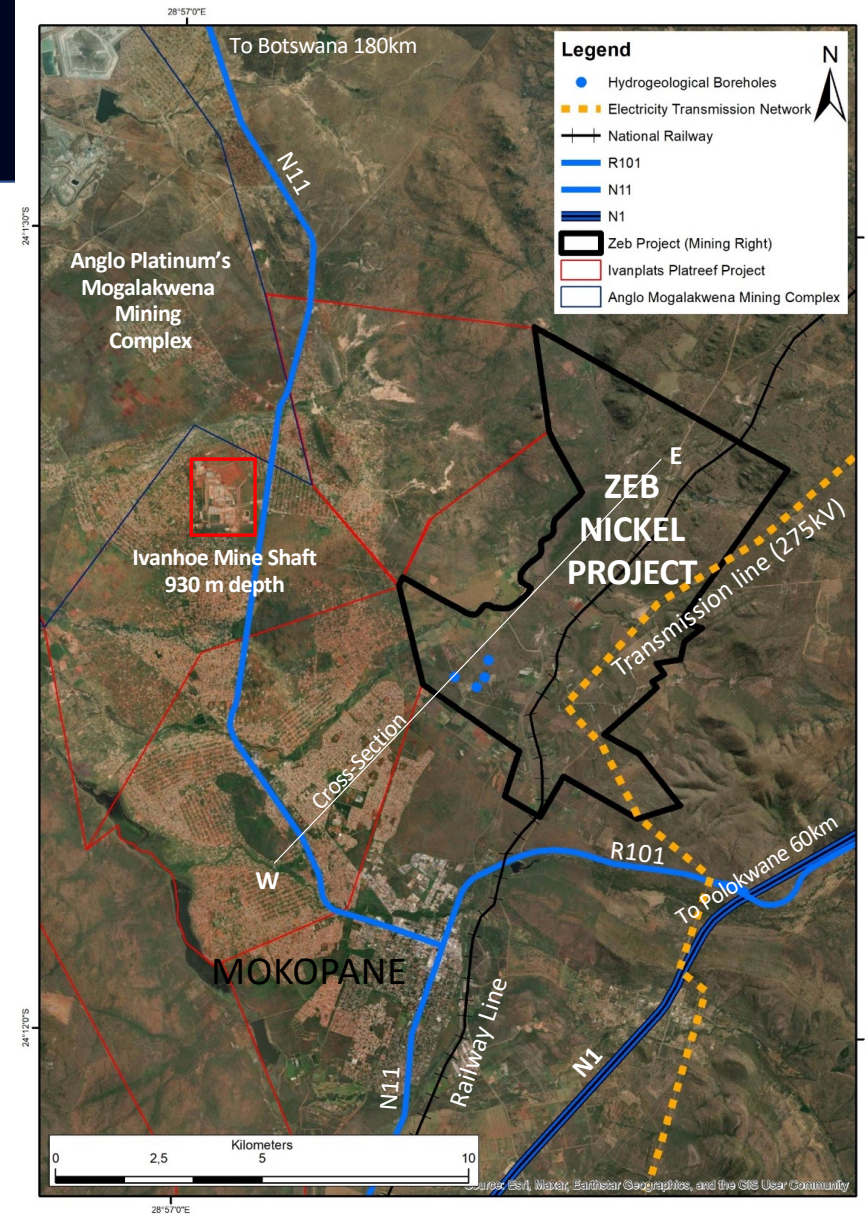






# Excellent Infrastructure

- Located in a well-established mining district
- Accessible from national highway, approximately 3 hours drive from Johannesburg
- Access to water identified
- Local labour force in close proximity from Mokopane
- Close proximity to power from National Grid
- Enough power to meet requirements
- Opportunities for additional power needs by entering into PPA with independent power producers to supply power by a mix of renewable and thermal energy power supply
- South Africa is a global leader in renewable energy





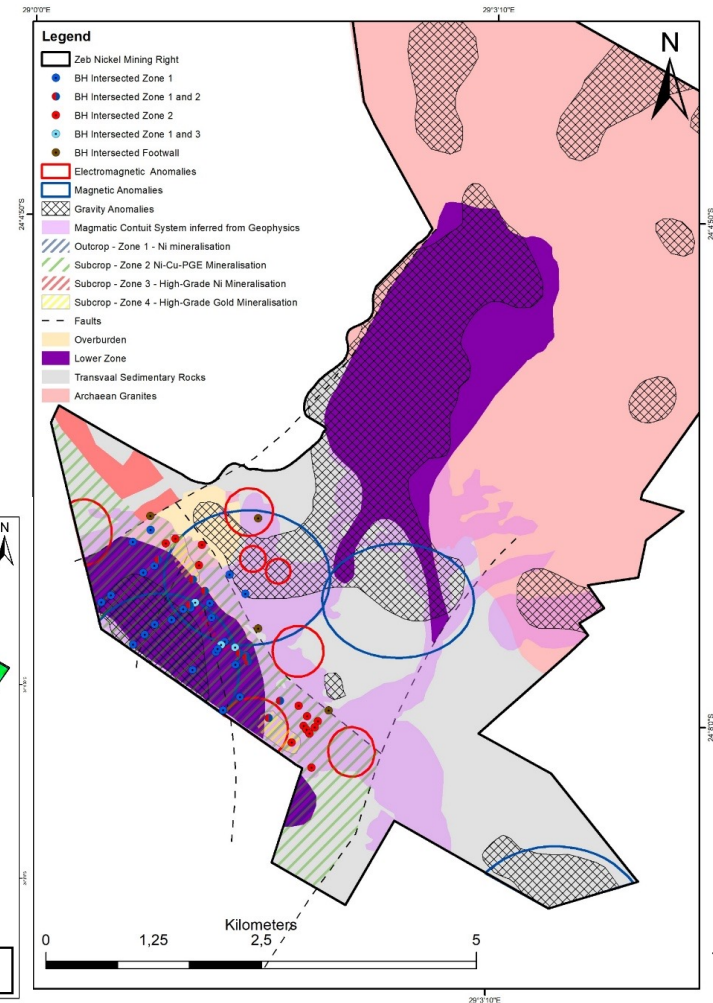
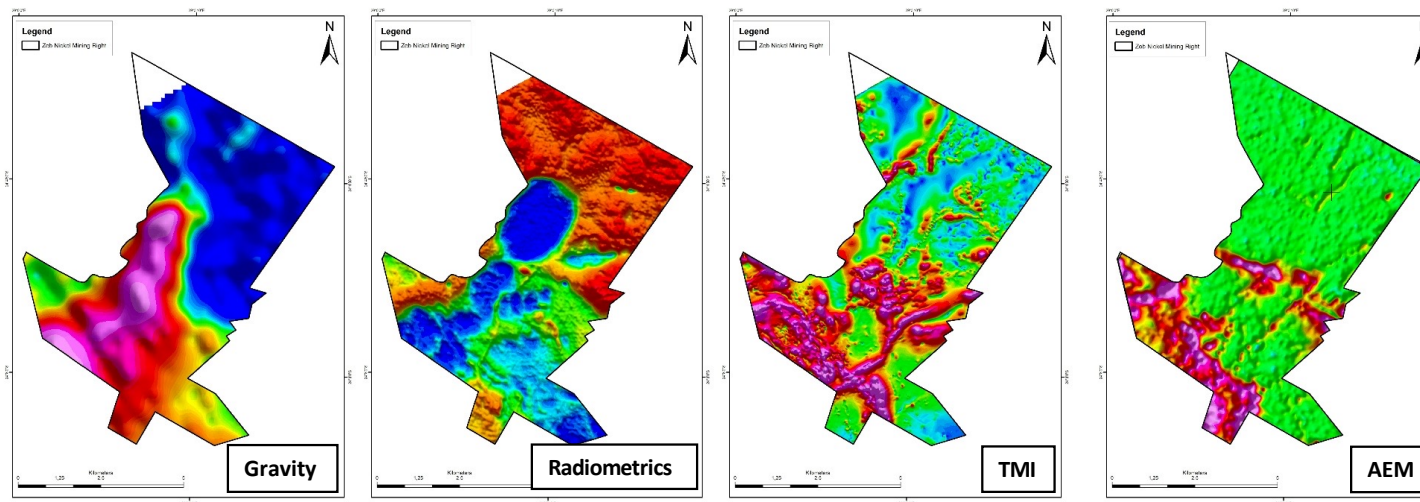
# Airborne Gravity, Magnetic & EM confirms Geological Model

High-quality airborne gravity, magnetic, and Spectrem Electromagnetic surveys were completed across the project area. The results define several gravity and magnetic anomalies that align closely with the known ultramafic and mafic bodies. The geophysical datasets collectively **identify and confirm the magmatic conduit system** that links the Uitloop ultramafic bodies, an ideal environment for:

- Long-lived magmatism;
- Immiscible sulphide formation;
- Effective trap sites for sulphide accumulation.

The Spectrum Electromagnetic survey outlined multiple anomalies along the margins of this conduit system, representing **high-priority positions for semi-massive to massive sulphide Ni-PGE mineralisation**. A total of **seven EM targets** have been defined, with several of these targets showing **overlapping responses from all three geophysical techniques**, significantly increasing confidence in their prospectivity.

The magmatic conduit system remains untested from a drilling perspective, with these targets representing high-grade nickel sulphide potential.







# Four Exploration Zones exist on the Project Area

## Zone 1: Existing open pit sulphide nickel resource hosted in the Lower Zone.

- Only the south-western Lower Zone (Uitloop II) body has been explored and the Lower Zone (Uitloop I) body and the chonolith bodies connecting the two Lower Zone bodies still remains open for exploration.

## Zone 2: Higher grade Ni-Cu-PGE mineralisation hosted in pyroxenitic lithologies.

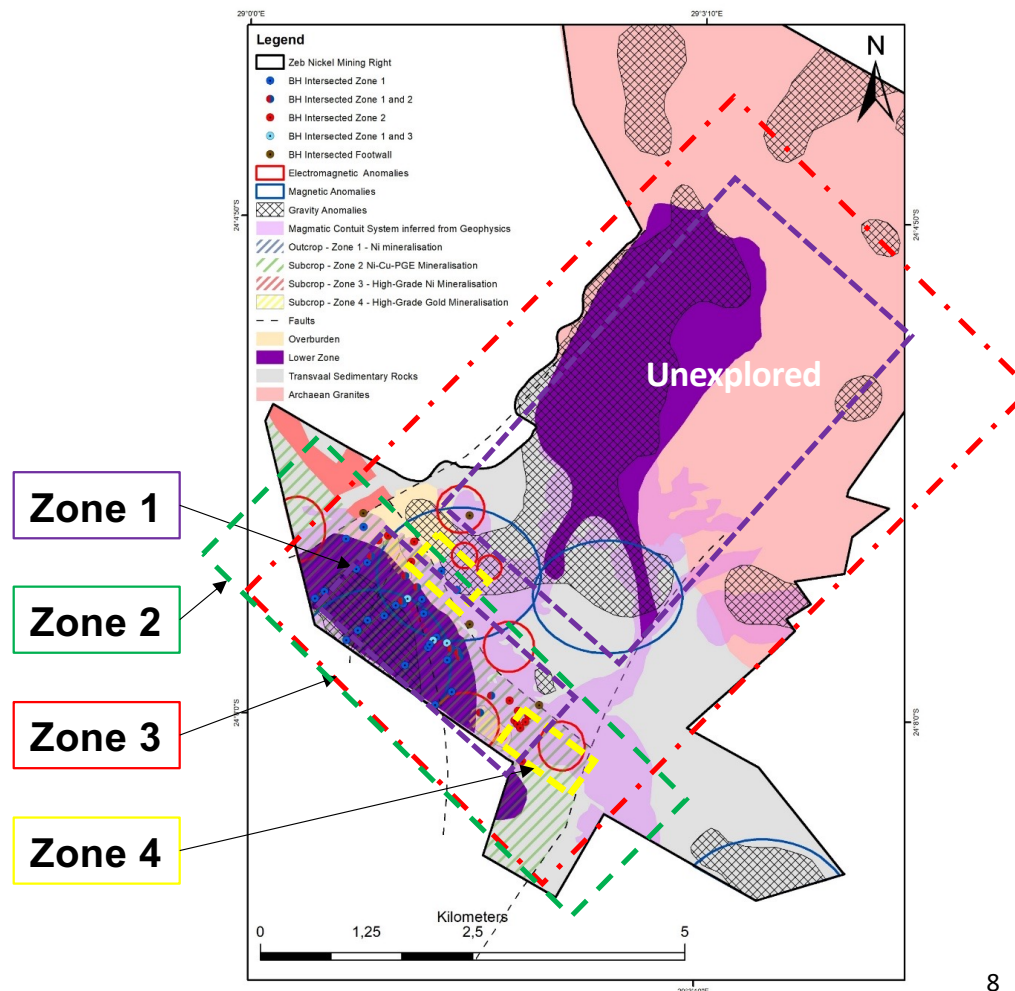
- The same mineralised horizon which is been mined on the Ivanhoe Mines “Platreef Project” and the Valterra Platinum “Mogalakwena Mining Complex”.
- Majority of the Zone 2 mineralisation is in a subcrop position, beneath the Transvaal Sediments and Lower Zone and is viewed best in drill core.

## Zone 3: Semi-massive to massive Ni-PGE sulphide mineralisation.

- The semi-massive to massive Ni-PGE mineralisation is associated with the Bushveld ultramafic plumbing system interacting with footwall rocks.
- The area holds similar features and regional structure to that of the Uitkomst intrusion where Nkomati massive Ni-Cu-Cr-PGE sulphide mineralisation is been mined by African Rainbow Minerals (ARM).

## Zone 4: Gold mineralisation.

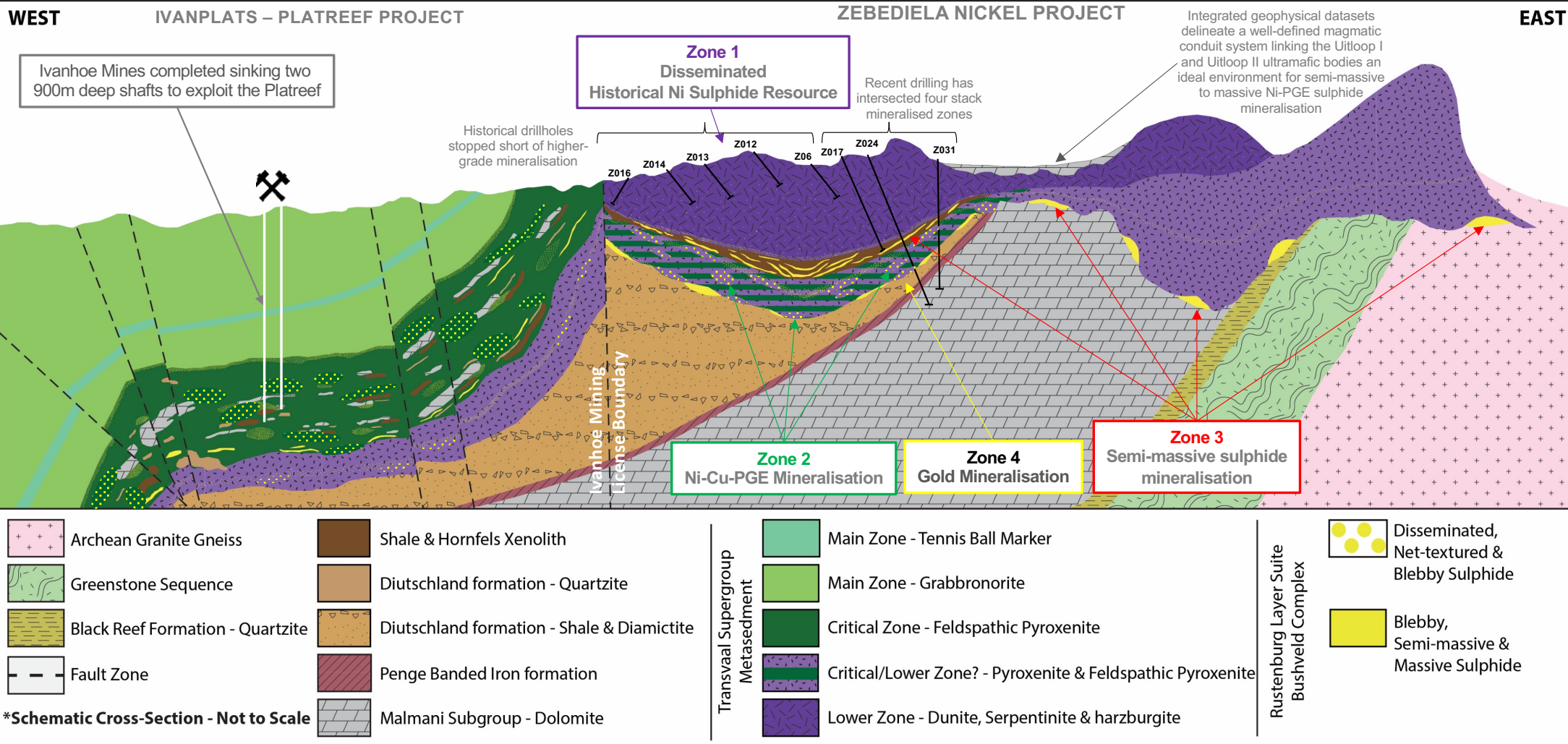
- The Gold discovery is related to remobilised gold from the adjacent Pietersburg Greenstone Belt and hydrothermal activity, as interested in Z027 and Z029 in the southwest portion of the project area. In addition, smaller gold-rich intervals were also intersected in the northwest portion of the project area, with the same style of mineralisation.





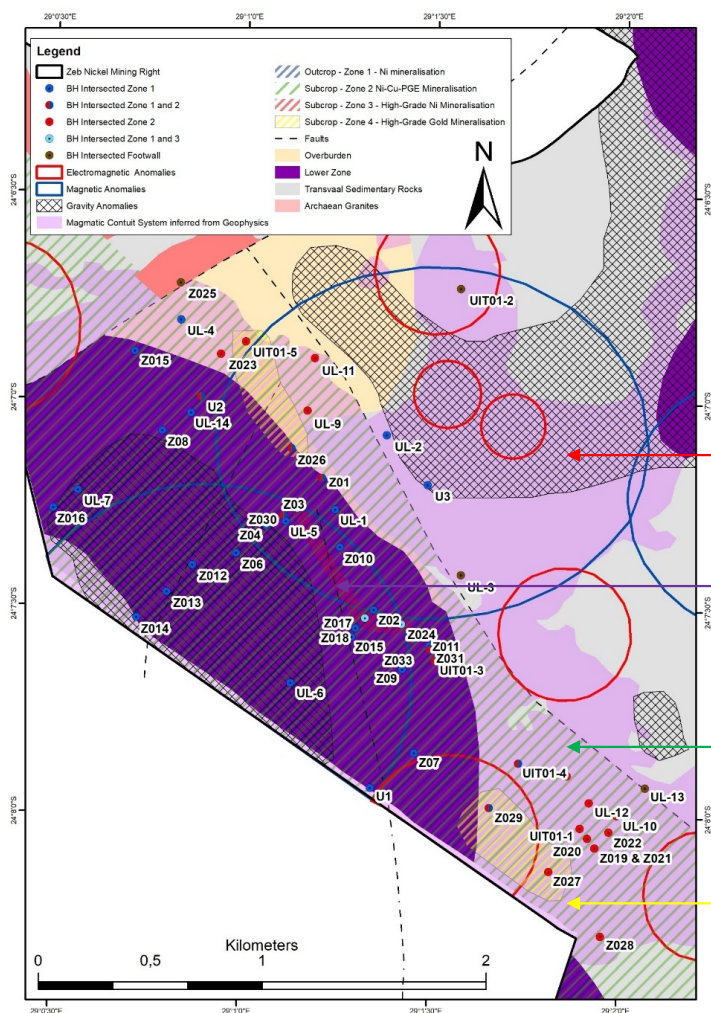


# Four Stacked Mineralised Zones





# Historical Drilling Inadequately Tests the Zones



Zone 3: Magmatic plumbing system not yet drill tested

Zone 1: Historical holes stopped short of higher-grade nickel mineralisation near the base of the Uitloop II body

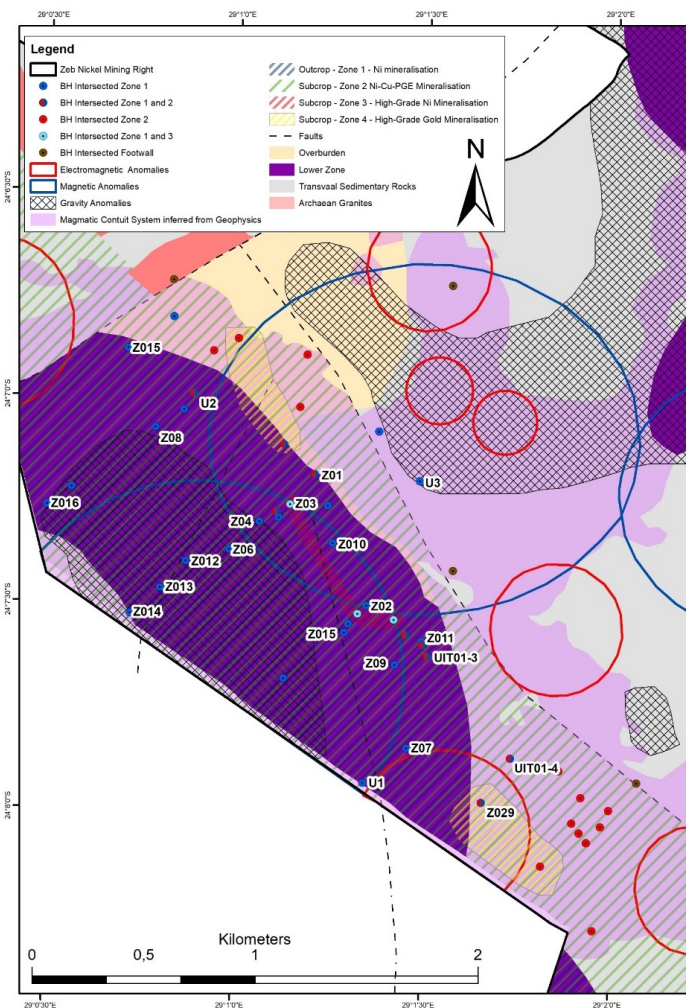
Zone 2: Poor coverage and historical holes frequently stopped short of intersecting Ni-Cu-PGE bearing lithologies (Critical Zone?). Not yet fully defined along strike.

Zone 4: Gold mineralisation is a recent discovery. No infill in gold zones





# Zone 1 – Historical Resource



## Summary of drill holes intersecting Zone 1 open pit Ni resource

Drill hole ID	Depth From	Depth To	Sample Interval	Inclination	Depth Below Surface	Ni <sup>^</sup>
	meters	meters	meters	degrees	meters	%
UIT01-3	8,00	232,00	224,00	50,00	6,13	0,18
UIT01-4	3,00	61,00	58,00	52,10	2,37	0,16
U1	11,00	660,00	649,00	50,00	8,43	0,24
U2	10,94	222,00	211,06	50,00	8,38	0,26
Z01	35,00	96,00	61,00	50,00	26,81	0,26
Z02	25,92	228,00	202,08	50,00	19,86	0,23
Z03	31,00	312,37	281,37	50,00	23,75	0,23
Z04	47,00	364,00	317,00	50,00	36,00	0,25
Z05	43,00	368,00	325,00	50,00	32,94	0,25
Z06	44,00	345,10	301,10	50,00	33,71	0,25
Z07	0,00	446,25	446,25	50,00	0,00	0,24
Z08	51,00	381,00	330,00	50,00	39,07	0,26
Z09	26,00	331,00	305,00	50,00	19,92	0,22
Z10	12,00	202,80	190,80	50,00	9,19	0,21
Z11	16,00	183,20	167,20	45,00	11,31	0,19
Z12	59,00	338,40	279,40	50,00	45,20	0,28
Z13	72,60	342,65	270,05	50,00	55,61	0,25
Z14	40,00	320,00	280,00	50,00	30,64	0,20
Z15	38,03	217,00	178,97	50,00	29,13	0,25
Z16	18,00	315,50	297,50	50,00	13,79	0,17

<sup>^</sup>Total Ni assay by complete digestion, representing the silicate and sulphide portion of Ni

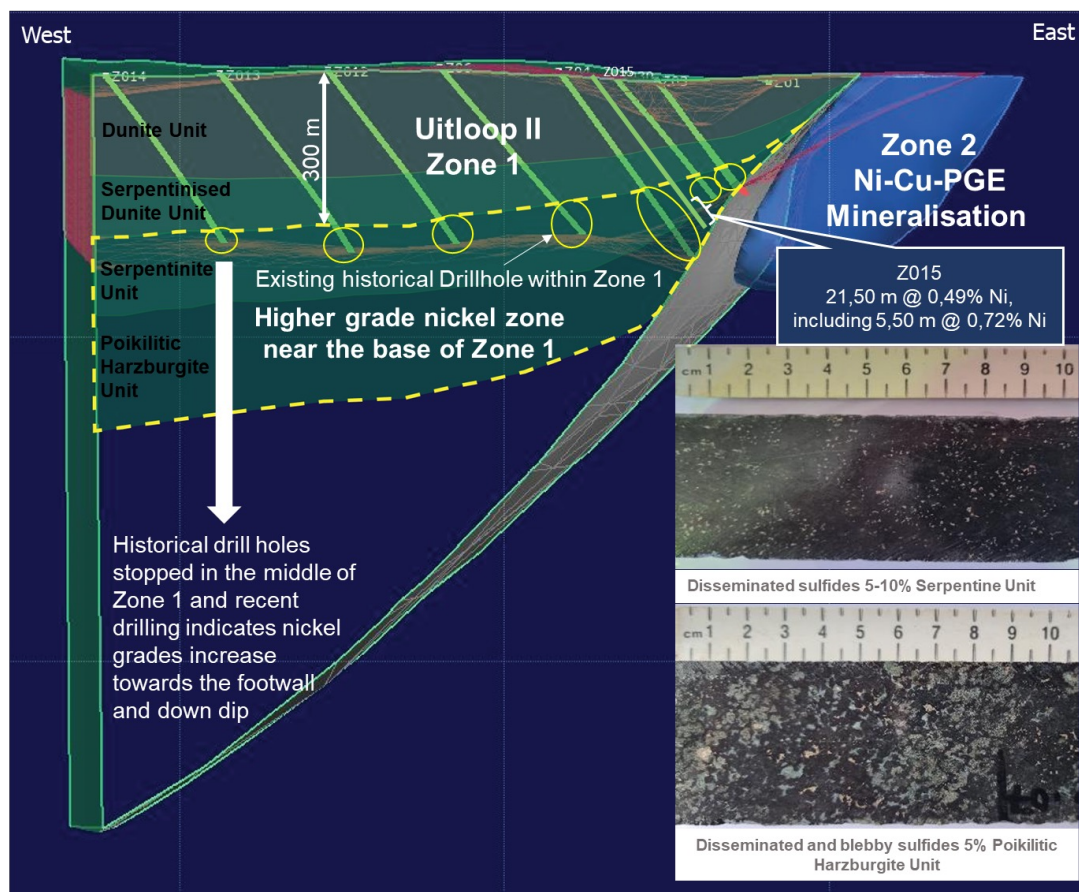
1. The Historical Resource Estimate used categories that conformed to CIM Definition Standards on Mineral Resources and Mineral Reserves (CIM, 2010) at the time of completion of the Historical Resource Estimate. The Historical Resource Estimate has an effective date of March 31, 2012 and estimated an Indicated Resource of 485.4 million tonnes averaging 0.245% Ni, with an additional Inferred Resource of 1,115.1 million tonnes at 0.248% Ni, using a cut-off grade of 0.1% TNi (Total Nickel) (Preliminary Economic Assessment for the Zebedele Nickel Project (2011) Croll *et al.*). The Historical Resource Estimate used a nickel price of US\$8.50 per pound or US\$18,739.00 per ton. The mineral resources were quoted as TNi and were restricted to mineralisation in the "sulphide Zone". They were stated as in-situ with no geological losses applied. The mineralisation in the Uitloop II body was constrained by a TNi grade-derived envelope. Although the intrusive body is largely coincident with this, there is no uniform geological control on the mineralisation across the body. Additional drilling was determined to be required to further investigate the morphology of the mineralised envelope and to in-fill sparsely-drilled areas. The Company's drill program planned for 2023 is intended to determine a current estimate of mineral resources on the Zeb Project and the extent to which the Historical Resource Estimate may be considered current. The Historical Resource Estimate is not supported by a compliant NI 43-101 technical report, and the Historical Resource Estimate should not be relied on until it has been verified and supported by a compliant NI 43-101 technical report. Richard Montjoie has supervised the preparation of the scientific and technical contained in this Project Summary and has approved the disclosure herein (other than the historical estimate). Mr. Montjoie is the CEO & VP Exploration of the Company and is not, therefore, independent of the Company. Mr. Montjoie is a registered member of the South African Council for Natural Scientific Professions (SACNASP) membership number 400131/09. Mr. Montjoie holds a M.Sc. in Economic Geology from the University of Witwatersrand, South Africa, and is a Fellow of the Geological Society of South Africa (GSSA).

The historical resource contains **1.6 billion tons** at an average grade of **0.25 % Ni<sup>1</sup>**.

Historical drilling was limited to **~250 m vertical** depth for open-pit design. Most holes were drilled at **~50°** from the horizontal surface and ended in the upper Zone 1 mineralised package, **without testing the full stratigraphy**.



# Zone 1 – Potential Ni Grade Improvements



Historical drilling stopped short of high-grade mineralisation near the base of the nickel-bearing body. Recent drilling intersected **higher-grade nickel** within the sulphide-rich, basal **Poikilitic Harzburgite Unit** of Zone 1, indicating that focusing on this unit could **reduce overall tonnage but significantly increase grade**.

## Summary of some of the higher nickel grades in Zone 1

Drill hole ID	Depth From	Depth To	Sample Interval	Inclination	Depth Below Surface	Ni <sup>^</sup>
	meters	meters	meters	degrees	meters	%
U1	391,00	395,00	4,00	50,00	299,52	0,42
U2	185,00	211,00	26,00	50,00	141,72	0,40
U3	255,00	258,00	3,00	50,00	195,34	0,39
Z02	71,50	73,38	1,88	50,00	54,77	0,38
Z04	292,00	294,00	2,00	50,00	223,68	0,46
Z05	261,00	265,00	4,00	50,00	199,94	0,39
<b>Z07</b>	<b>322,00</b>	<b>324,00</b>	<b>2,00</b>	<b>50,00</b>	<b>246,67</b>	<b>0,53</b>
Z08	155,00	157,84	2,84	50,00	118,74	0,40
<b>Z09</b>	<b>58,00</b>	<b>60,00</b>	<b>2,00</b>	<b>50,00</b>	<b>44,43</b>	<b>0,81</b>
Z09	112,00	114,00	2,00	50,00	85,80	0,40
Z10	27,00	30,00	3,00	50,00	20,68	0,41
<b>Z12</b>	<b>329,00</b>	<b>333,00</b>	<b>4,00</b>	<b>50,00</b>	<b>252,03</b>	<b>0,51</b>
Z13	141,00	143,00	2,00	50,00	108,01	0,40
Z15	193,50	215,00	21,50	50,00	148,23	0,49
<b>Z15</b>	<b>206,00</b>	<b>211,50</b>	<b>5,50</b>	<b>50,00</b>	<b>157,81</b>	<b>0,72</b>
<b>Z15</b>	<b>213,50</b>	<b>215,00</b>	<b>1,50</b>	<b>50,00</b>	<b>163,55</b>	<b>0,67</b>
Z17	304,00	308,00	4,00	39,10	191,73	0,40
Z24	196,23	211,00	14,77	48,60	147,19	0,41
Z26	95,45	100,00	4,55	49,00	72,04	0,34

<sup>^</sup>Total Ni assay by complete digestion, representing the silicate and sulphide portion of Ni; Additional drilling is required to determine true thickness;

"Depth From", "Depth To" and "Sample Interval" reported are depths from surface down the drill hole.

Depths shown are depths down the hole, holes drilled at ~50° from the horizontal to the end of hole.





# Zone 2 - Drill Results

## A few on the drill holes result intersecting Ni-Cu-PGE bearing lithologies

Drill hole ID	Depth From	Depth To	Sample Interval	Depth Below Surface	Ni <sup>^</sup>	Cu	Pt	Pd	Rh	Au	3PGE + Au*
	meters	meters	meters	meters	%	%	g/t	g/t	g/t	g/t	g/t
UIT01-1	158,00	161,00	3,00	121,04	0,25	0,08	0,64	1,38		0,14	2,16
U2	288,00	291,00	3,00	220,62	0,31	0,16	0,79	0,62		0,10	1,51
Z019	133,00	170,80	37,80	78,92	0,29	0,09	0,40	0,68	0,07	0,04	1,19
<i>*Including</i>	133,00	142,00	9,00	78,92	0,42	0,15	0,60	1,22	0,08	0,07	1,97
<i>*Including</i>	169,00	170,60	1,60	100,29	0,50	0,12	0,73	0,92	0,22	0,04	1,91
Z020	53,00	71,00	18,00	41,19	0,41	0,13	0,53	1,07	0,10	0,05	1,75
<i>*Including</i>	55,00	64,00	9,00	42,74	0,51	0,18	0,73	1,47	0,13	0,07	2,40
Z020	174,00	176,07	2,07	135,22	0,59	0,15	0,90	0,95	0,11	0,05	2,01
Z021	187,00	210,00	23,00	169,62	0,32	0,10	0,36	0,79	0,05	0,05	1,25
<i>*Including</i>	194,00	199,00	5,00	175,97	0,48	0,12	0,57	1,45	0,08	0,06	2,16
Z022	95,00	95,50	0,50	72,02	0,39	0,13	5,68	0,63	0,02	0,04	6,37
Z023	214,00	217,00	3,00	163,93	0,22	0,12	0,71	0,25	0,03	0,12	1,11
<i>*Including</i>	214,50	215,50	1,00	164,32	0,44	0,24	1,80	0,45	0,06	0,24	2,55
Z025	87,00	93,00	6,00	66,65	0,07	0,02	0,08	0,12	0,01	0,01	0,22
Z026	277,50	290,00	12,50	209,43	0,35	0,15	0,78	0,94	0,06	0,06	1,84
<i>*Including</i>	284,00	287,00	3,00	214,35	0,47	0,19	0,78	1,30	0,08	0,06	2,22
<i>*Including</i>	288,50	290,00	1,50	217,73	0,41	0,16	0,55	1,20	0,07	0,06	1,88
Z027	420,00	425,00	5,00	314,98	0,26	0,07	0,18	0,41	0,08	0,04	0,71
<i>*Including</i>	420,00	421,50	1,50	320,32	0,69	0,11	0,31	0,67	0,25	0,04	1,27
Z028	338,09	343,50	5,41	258,23	0,29	0,09	0,41	0,77	0,09	0,05	1,32
<i>*Including</i>	341,28	343,50	2,22	260,67	0,46	0,15	0,76	1,44	0,17	0,06	2,43
Z028	413,00	449,50	36,50	314,98	0,22	0,08	0,24	0,48	0,04	0,03	0,79
<i>*Including</i>	427,00	433,50	6,50	325,65	0,37	0,18	0,54	1,10	0,10	0,06	1,80
Z031 D0	342,44	346,50	4,06	342,44	0,23	0,14	0,46	0,77	0,04	0,09	1,36
<i>*Including</i>	342,44	344,00	1,56	342,44	0,30	0,18	0,62	0,94	0,05	0,11	1,72

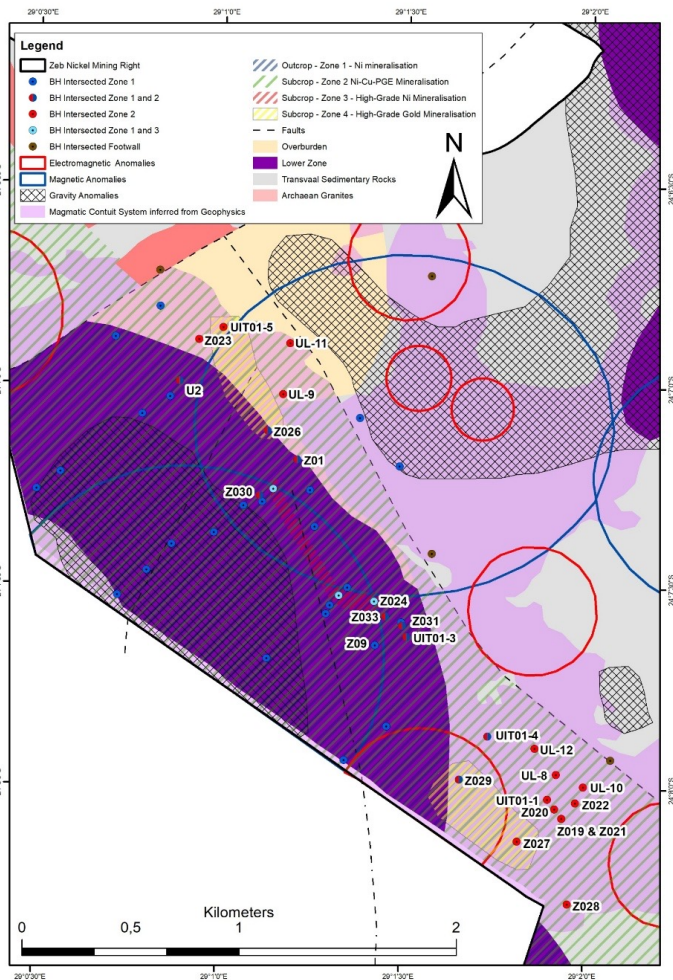
\* 3PGE+Au equals platinum + palladium + rhodium + gold by fire assay with ICP-AES Finish;

<sup>^</sup>Total Ni assay by complete digestion, representing the silicate and sulphide portion of Ni;

Additional drilling is required to determine true thickness;

"Depth From", "Depth To" and "Sample Interval" reported are depths from surface down the drill hole.

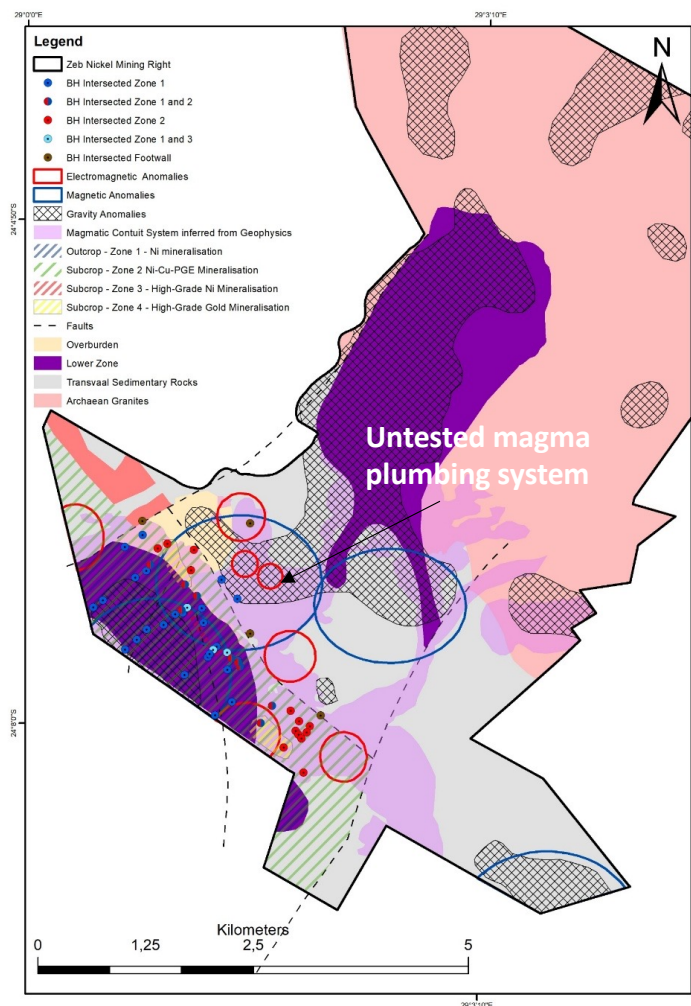
Depths shown are depths down the hole, holes drilled at ~50° from the horizontal to the end of hole.



All the labelled drillhole intersected Zone 2 Ni-Cu-PGE+Au Mineralisation

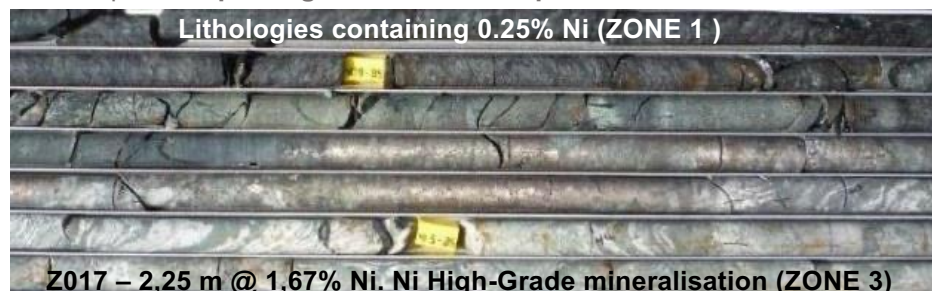


# Zone 3 – Massive Ni Sulphide Mineralisation



The geology of the Project area ticks all the boxes for massive sulphide Ni-Cu-PGE mineralisation:

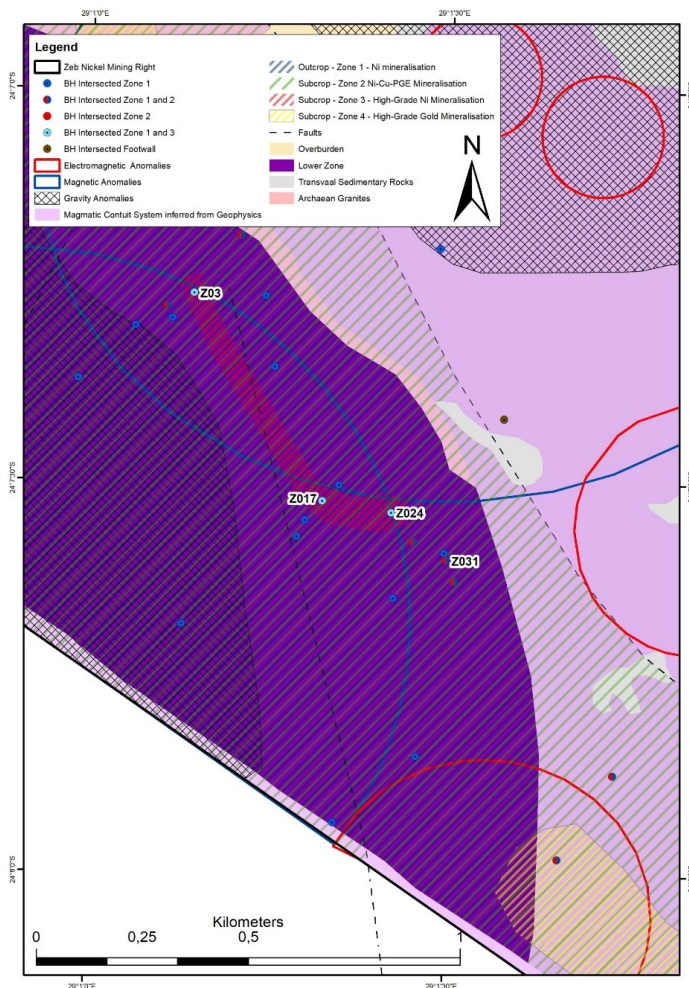
- **Semi-massive to massive sulphide Ni-Cu-PGE mineralisation** has been intersected on the Zeb Project area and neighbouring project areas confirming the fertility of the intrusive system.
- The Uitloop bodies have a **similar geometry and geology** to that of the **Uitkomst Ni-PGE mine**, located in South Africa.
- Recent **high-resolution airborne gravity, magnetic, and electromagnetic (Spectrem) surveys** have identified and **confirmed a magmatic conduit system** linking the Uitloop I and Uitloop II ultramafic bodies.
- This **conduit architecture is highly favourable** for the formation of **magmatic sulphide deposits**.
- Surveys delineate **several coincident gravity–magnetic–EM anomalies** along the **margins** and **within the conduit pathway**.
- The interpreted conduit system provides the ideal environment for:
  - **Long-lived and focused magmatic flow,**
  - Formation of **immiscible sulphide liquids,**
  - **Efficient trapping sites** for sulphide accumulation at structural embayments or flow restrictions,
  - Upward transport and **pooling of metal-rich sulphide melts.**







# Zone 3 - Drill Results



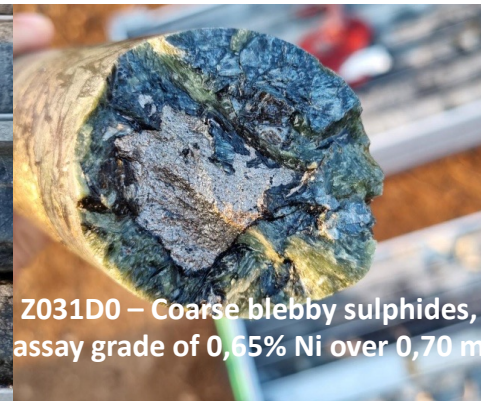
All the labelled drillhole intersected semi-massive sulphides

## Drill holes intersecting Ni-PGE bearing lithologies

Drill hole ID	Depth From	Depth To	Sample Interval	Depth Below Surface	Ni <sup>^</sup>	Cu	Pt	Pd	Rh	Au	3PGE + Au <sup>*</sup>
	meters	meters	meters	meters	%	%	g/t	g/t	g/t	g/t	g/t
Z03	324,00	325,00	1,00	248,20	1,00	0,06	0,16	0,43	0,12	0,04	0,75
Z03	331,00	332,00	1,00	253,56	0,50	0,19	0,14	0,28	0,03	0,03	0,48
Z017	412,75	415,00	2,25	260,31	1,67	0,51	0,21	0,41	0,03	0,06	0,71
Z024	210,44	211,00	0,56	157,85	1,00	0,11	0,20	0,33	0,03	0,03	0,59
Z031 D0	330,97	332,00	1,03	330,97	0,60	0,14	0,41	0,12	0,01	0,03	0,57
Z031 D0	338,53	341,26	2,73	338,53	0,39	0,30	0,06	0,09	0,01	0,10	0,26
*Including	338,53	340,20	1,67	338,53	0,46	0,32	0,07	0,11	0,01	0,10	0,29
**Including	339,50	340,20	0,70	339,50	0,65	0,40	0,09	0,11	0,01	0,15	0,36



Z024 - Semi-massive, net-textured sulphide zone assay grades of 0,59g/t 3PGE+Au & 1.00% Ni over 0,56 m



Z031D0 - Coarse blebby sulphides, assay grade of 0,65% Ni over 0,70 m

\* 3PGE+Au equals platinum + palladium + rhodium + gold by fire assay with ICP-AES Finish;  
<sup>^</sup>Total Ni assay by complete digestion, representing the silicate and sulphide portion of Ni;



# Zone 4 – Gold Discovery

Gold mineralisation related to the Pietersburg Greenstone Belt:

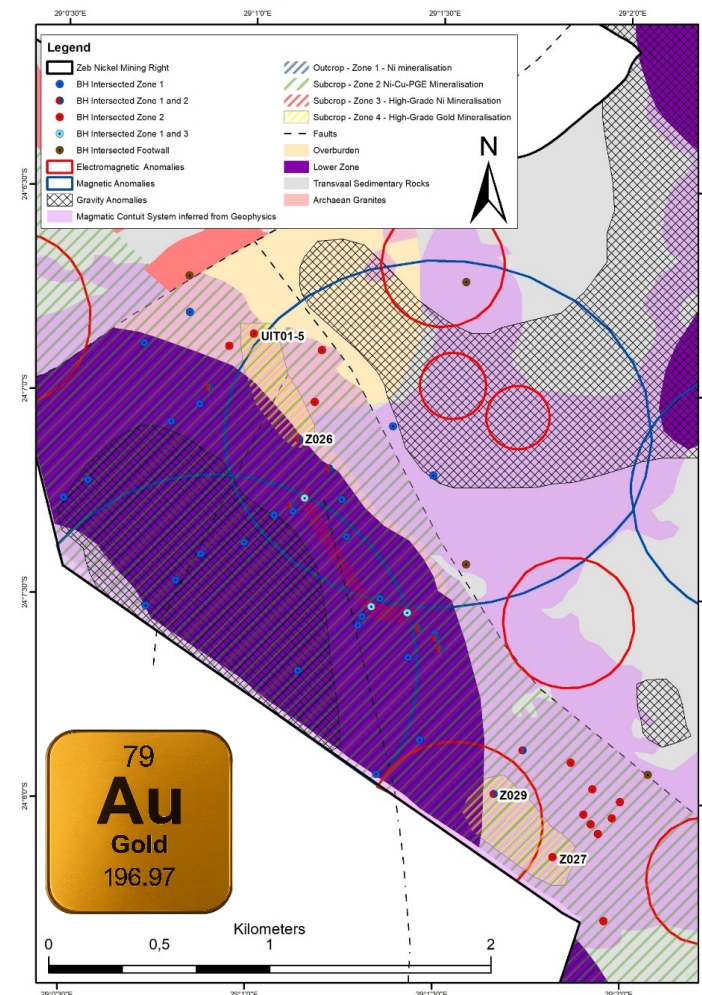
- Ore-grade intersections of gold have been found in the northern and southern areas of the Project, 2 km apart
- The gold is most likely hydrothermal in origin and remobilised from the adjacent Pietersburg Greenstone Belt, which hosts several historical gold mines.
- Infill drilling should rapidly define a gold resource between the existing intersections

Drillhole ID	Depth From	Depth To	Sample Interval	Ni <sup>^</sup>	Cu	Pt	Pd	Rh	Au
	<i>meters</i>	<i>meters</i>	<i>meters</i>	<i>%</i>	<i>%</i>	<i>g/t</i>	<i>g/t</i>	<i>g/t</i>	<i>g/t</i>
UIT01-5	93,00	94,00	1,00	0,04	0,00	†	†	†	2,45
UIT01-5	97,00	98,00	1,00	0,04	0,00	†	†	†	0,82
Z026	221,41	223,24	1,83	0,03	0,24	†	†	†	0,68
Z026	250,50	252,00	1,50	0,02	0,12	†	†	†	1,38
Z027	290,00	324,00	<b>34,00</b>	0,01	0,01	†	†	†	<b>1,67</b>
*Including	305,00	310,00	5,00	0,01	0,01	†	†	†	5,07
*Including	313,00	315,00	2,00	0,01	0,01	†	†	†	4,30
Z029	387,68	416,00	<b>28,32</b>	0,01	0,01	†	†	†	<b>9,05</b>
*Including	397,00	416,00	19,00	0,01	0,01	†	†	†	12,51
*Including	397,00	412,64	15,64	0,01	0,01	†	†	†	15,02
**Including	397,00	398,54	1,54	0,01	0,01	†	†	†	74,20
**Including	410,00	412,64	2,64	0,01	0,01	†	†	†	41,06

\* 3PGE+Au equals platinum + palladium + rhodium + gold by fire assay with ICP-AES Finish;

<sup>^</sup>Total Ni assay by complete digestion, representing the silicate and sulphide portion of Ni;

Depths shown are depths down the hole, holes drilled at ~50° from the horizontal to the end of hole.







# Geological Insight from recent Exploration Activities

Zeb Exploration program has revealed key learnings for the next phase of Resource Drilling:

1. **Ni-Cu-PGE mineralisation confirmed across the Project Area**, hosted in the same rock units mined at **Ivanhoe's Platreef** and **Valterra's Mogalakwena operations**.;
2. **Ni-Cu-PGE-bearing rocks (Zone 2) identified beneath Zone 1** and along strike for **>3.5 km.**;
3. **Increasing nickel grade with depth in Zone 1**, key mineralised horizons identified for future high-grade drilling;
4. Confirmation of areas of **higher Ni-Cu-PGE grade within the Zone 2 rocks**;
5. **Ultramafic plumbing system** recognised between Uitloop II (Zone 1) and Uitloop I. A **key control for massive sulphide formation (Zone 3)**, identified through the airborne geophysical programs, with **numerous gravity, mag and EM targets**;
6. The presence of **hydrothermal gold mineralisation** related to the nearby Pietersburg Greenstone Belt (Zone 4).





# Upcoming Catalysts and Work Programme

## 1. Mining Right Awarded

- Secures Mining Right for a 30-year period.

## 2. Ground-Based Geophysics

- Ground Electromagnetic and Gravity surveys underway to refine airborne anomaly interpretations.
- Modelling and target ranking to define priority drill targets.

## 3. Geological & Resource Modelling

- Update Leapfrog 3D model integrating geology and new geophysical data.
- Define number and position of drillholes for upcoming drilling.

## 4. Drilling Programme Design

- Plan Ni-Cu-PGE resource drilling (Zone 2) and high-grade Ni targets (Zone 3).
- Drilling will test overlapping conductor and density anomalies.

## 5. Funding & Execution

- Capital raised.
- Appointment of drilling contractors and commencement of staged drilling.
- Progressive release of results as drilling advances.



# Contacts

**John Zorbas**

*Chief Executive officer*

E-Mail: [john@urumetals.com](mailto:john@urumetals.com)

**Anthony James Nieuwenhuys**

*Chief Executive officer*

E-Mail: [james@zebnickel.com](mailto:james@zebnickel.com)

**Richard Montjoie**

*Technical Director*

E-Mail: [rmontjoie@everseed.co.za](mailto:rmontjoie@everseed.co.za)

**Dr. Matthew McCreesh**

*Project Geologist*

E-Mail: [mmccreesh@everseed.co.za](mailto:mmccreesh@everseed.co.za)

